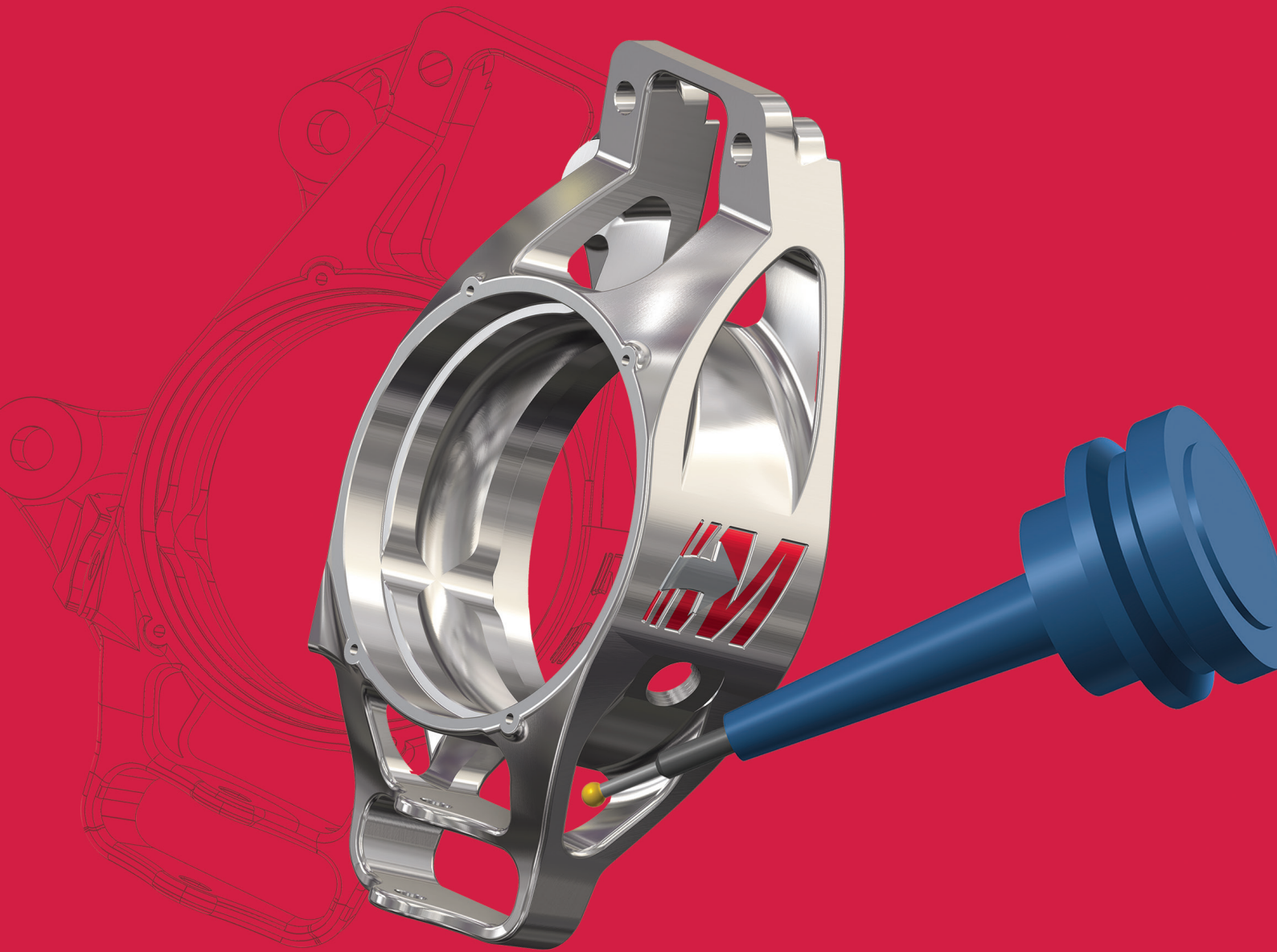




MULTIAXIS



Mastercam Multiaxis provides comprehensive speed and precision that every multiaxis shop requires.

Mastercam 2020

SIMPLIFIED MULTIAXIS FOR ADVANCED PRODUCTIVITY

Complexity simplified.

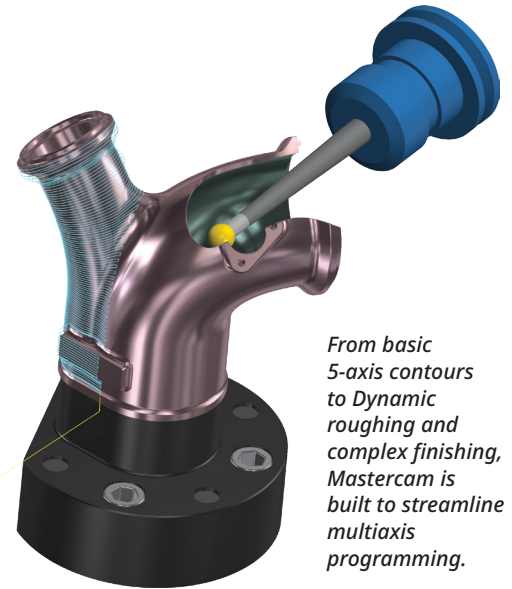
With Mastercam, you have complete control over the three crucial elements of multiaxis machining: cut pattern, tool axis control, and collision avoidance. From 4-axis rotary and roll-die cutting to multiblade impellers with tight internal cuts, Mastercam helps simplify even the most complex jobs.

Other highlights include:

- **Multisurface 5-axis** roughing and finishing (including depth cuts), plunge roughing, and flowline machining.
- Swarf machining over multisurface floors.
- **Advanced gouge checking**, a "safe zone" around the part, and safe linking between operations.
- Fast, simple 5-axis trimming and stock-aware drilling.
- Ability to create full 5-axis motion from a **3-axis toolpath**.

For specialty machining, ask about these available Add-Ons:

- **Mastercam Blade Expert** for multibladed parts and hubs.
- **Mastercam Port Expert** for head ports and tube-type applications.



From basic 5-axis contours to Dynamic roughing and complex finishing, Mastercam is built to streamline multiaxis programming.

ADDITIONAL MULTIAXIS ADD-ONS



Mastercam Port Expert

Create precision engine cylinder head porting toolpaths on surface or solid data, while minimizing unnecessary motion.



Mastercam Blade Expert

Highly efficient toolpaths for multibladed parts, delivering superior blades, splitters, floors, and fillets.



5-Axis Curve Machining and Drilling

If you only need limited multiaxis programming, add these two powerful techniques with the option to upgrade to the full Multiaxis package later.

For more information, contact a local Mastercam expert at
[Mastercam.com/Resellers](https://www.mastercam.com/Resellers).